

# Parkheath

*Sold on Service*

---

**Finchley Road NW3**

**£1,840 PCM (£425 per week) - Camden Band C**



Excellent 1 bedroom apartment

Modern development above commercial premises

Reception room with wooden floors

Tiled shower room

Not eligible for Resident's permit parking

Moments to Finchley Road underground station

Communal roof terrace with impressive views

Modern open plan kitchen

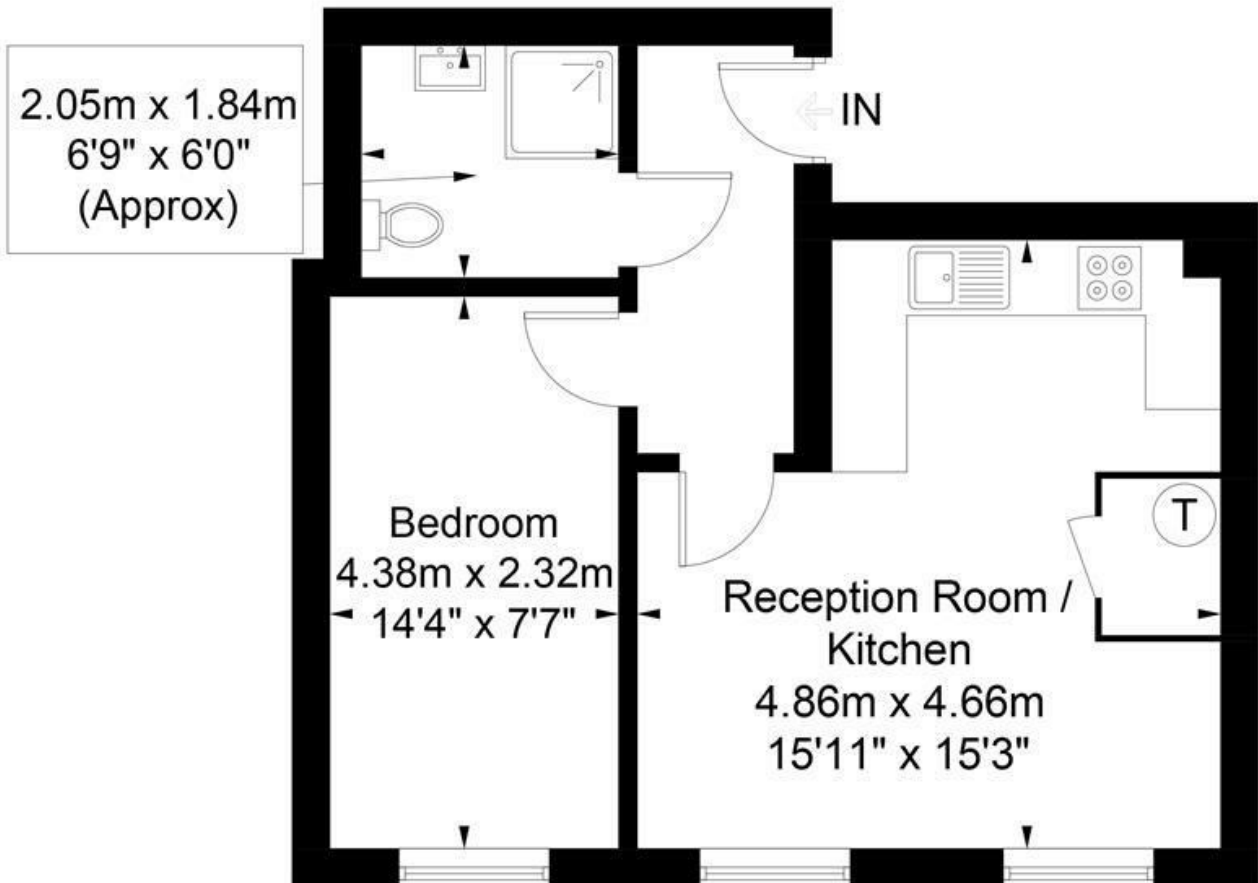
Within a few hundred yards of the O2 Centre

EPC rating D / Council tax: Camden (band C)

West Hampstead Office 020 7794 7111

## Finchley Road

Approximate Gross Internal Area = 39.8 sq m / 428 sq ft



## Second Floor

Illustration for identification purposes only, measurements are approximate,  
not to scale. FloorplansUsketch.com © 2019 (ID552930)  
ELLIE CLAIRE PHOTOGRAPHY LTD

The particulars do not constitute part of an offer or contract. The particulars, including text, photographs and plans, are for the guidance only of prospective purchasers/tenants and must not be relied upon as statements of fact. The descriptions provided therein represent the opinion of the author and whilst given in good faith should not be construed as statements of fact. Nothing in these particulars shall be deemed a statement that the property is in good condition or otherwise or that any services or facilities are in good working order. All measurements are approximate